

2021 Value Engineering Report

- Foundation Edition -

Keeping Projects within budget has always been important but in these recent somersaulting economic times of ours, it has been “Importanter” (of course within safety bounds) 😊.

BOM Associates provided Peer Review/Value Engineering Services on several projects within the last year and “hooge” savings were made overall. A few figures from the Foundation Savings:

- Project 1: **80** Nos, 500dia CFA Piles to 15m depth
- Project 2: **43** Nos, 450dia CFA Piles to 20m depth
- Project 3: **30** Nos, 300x300 Sqr Driven Piles to 25m depth
- Project 4: **172** Nos, 350x350 Sqr Driven Piles to 14m Depth

325 Nos and **5.22 km** equivalent length of Piles Saved

5.22 km distance= Osborne, **Ikoyi** to Ahmadu Bello, **V.I**



How ?

Simply put, **REALISTIC LOADING**

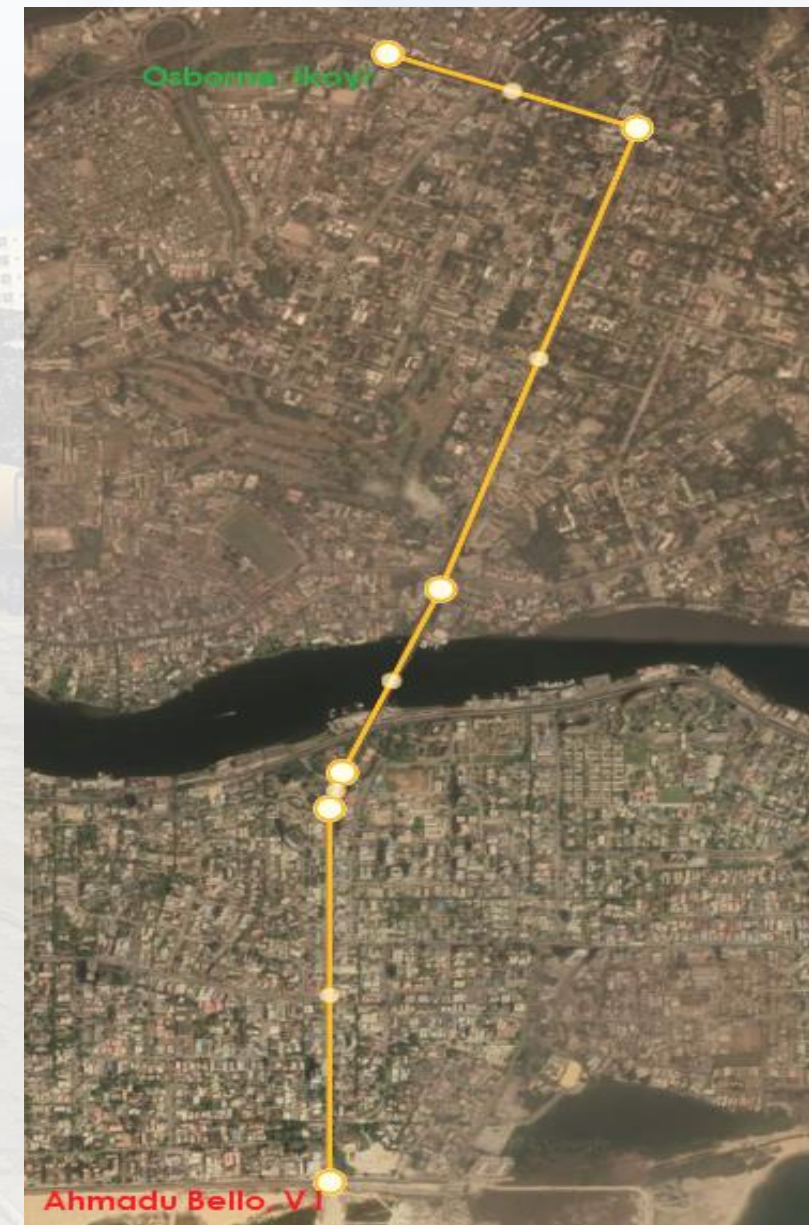
Why Incorporate **Loads** That Will **Not Exist** ???



BOM Associates

Consulting Civil / Structural Engineers

www.bomasso.com



project reality, a must...